



SUPPORTING AND PROMOTING
ARTS & CULTURE ON THE SAANICH PENINSULA

2024 Annual Report

ArtSea is fortunate to operate within the unceded territory of the Coast Salish People
within the traditional territory of the WSÁNEĆ Nation –
Pauquachin, Tsartlip, Tsawout and Tseycum peoples.

ARTSEA.CA

Table of Contents

A Message from the President	1
Vision, Mission, Mandate, History	2
The ArtSea Board of Directors	3
ArtSea Staff, Contractors, and Volunteers	4
Municipal and Provincial Support	5
ArtSea Membership	5
Strategic Planning Update	6-7
Resources for ArtSea Members and the Community	8
 <u>ArtSea Programs and Events</u>	
The ArtSea Gallery in Tulista Park	9-11
The Salish Sea Lantern Festival	12-13
The ArtSea Studio Tour	14-15
The Sidney Art Walk	16
The Sidney Seaside Sculpture Walk	17
Saanich Peninsula Arts and Culture Grant Program	18-19
ArtSea Scholarship: Dianne Cross Award for the Arts	20
World Art Day Partnership	21
Artwork Display at Coast Capital Savings	21
Sidney Events Advisory Group (SEAG)	21
 <u>ArtSea Financial Information</u>	
ArtSea Revenue Sources	22
Grant and Sponsorship Revenue	23
Financial Statements	24-28
Notes to the Financial Statements	29-30

2024 HIGHLIGHTS
20,000+ visitors to the ArtSea Gallery in Tulista Park
2000+ attendees at the Salish Sea Lantern Festival
\$31,000+ in municipal grant and bursaries funding distributed through the SPACG program for arts and culture initiatives
More than \$100,000 donated in volunteer hours to support arts and culture in our community

What is the Role of a Community Arts Council?

A Community Arts Council is an organization that serves as a hub and advocate for the arts within a specific community or region. It is typically a non-profit organization that works to foster artistic expression, creativity, and cultural engagement within the community.

Community Arts Councils provide various services and resources to artists and arts organizations, such as exhibition and performance spaces, workshops, networking and collaboration opportunities, and advocacy for the arts at the local and regional levels.

Community Arts Councils play a crucial role in building and sustaining a vibrant arts community by facilitating connections between artists, audiences, and community members. They aim to enhance the accessibility, diversity, and inclusivity of the arts, promoting cultural enrichment and economic development. Through advocacy, education, and resource-sharing, Community Arts Councils strive to enhance quality of life, stimulate economic growth, and promote social cohesion by leveraging the transformative power of the arts.

A Message from the President

As we reflect on 2024, I am filled with gratitude for the unwavering support of our members, volunteers, partners, and staff. Together, we have continued to foster creativity, celebrate community, and promote arts and culture across the Saanich Peninsula, even in the face of financial uncertainty and operational challenges.

This year, ArtSea programs engaged thousands of residents and visitors through meaningful cultural experiences. Our ArtSea Gallery in Tulista Park remained a community hub for artists and art lovers alike, hosting more than 150 artists and welcoming over 20,000 visitors. For the second year in a row, it was recognized as the top gallery on the Saanich Peninsula—a testament to its value in our community.

The Salish Sea Lantern Festival once again lit up our region with magic and connection. With hundreds of community-made lanterns, dozens of large-scale installations, and over 2,000 attendees at the evening festival, this event beautifully demonstrated the power of art to unite and inspire.

Our 30th annual ArtSea Studio Tour was a milestone celebration, featuring over 40 artists and drawing hundreds of visitors to studios throughout the Peninsula. The Sidney Art Walk and Seaside Sculpture Walk further strengthened our partnerships and expanded public access to the arts.

ArtSea also continued to administer the Saanich Peninsula Arts and Culture Grants and the Dianne Cross Award for the Arts, providing essential funding and encouragement to local creatives. These initiatives play a critical role in nurturing emerging talent and supporting innovative arts projects in our community.

While we celebrate these successes, we also acknowledge the significant funding challenges we faced this year. A major anticipated grant did not materialize, and overall grant support for the arts continued to decline. In response, our team worked diligently to reduce expenses, secure new sponsors, and introduce creative fundraising initiatives to protect the sustainability of our programs.

As we look ahead, we remain committed to our vision of a culturally rich and diverse Saanich Peninsula. With continued collaboration, innovation, and community spirit, we will ensure that ArtSea remains a beacon for the arts—accessible, inspiring, and deeply rooted in the place we call home.

With sincere appreciation



Ethel Mailhot

Ethel Mailhot, President
ArtSea Community Arts Council Society



ArtSea Community Arts Council

ArtSea is a charitable organization that supports and promotes arts and cultural programs and activities for more than 50,000 residents living on the Saanich Peninsula, extending to hundreds of thousands living in neighboring communities. This population crosses several municipalities and indigenous communities and includes residents living in rural and semi-rural areas, townships, and urban areas. ArtSea welcomes members and program participants from these communities, and encourages residents, volunteers, contractors, and employees from the region to join the organization and help to inform and present arts and cultural programming for the community.

To serve a diverse population with varying needs and interests, ArtSea initiatives are designed to be flexible, inclusive, and appeal to a wide range of arts and cultural interests. Our programs aim to enhance the accessibility, diversity, and inclusivity of the arts, promoting cultural enrichment and economic development within the community.

ArtSea Vision, Mission, Mandate

Vision: For the Saanich Peninsula to be recognized as a major art and cultural center in British Columbia.

Mission: ArtSea supports and promotes the development of all forms of the arts and cultural activities on the Saanich Peninsula.

Mandate: To encourage public awareness of and participation in the cultural life of the Saanich Peninsula. To fulfill its mandate ArtSea will:

1. Promote awareness of and participation in the arts.
2. Serve as the cultural voice of the community, advocating on its behalf with government and industry stakeholders.
3. Be the go-to place for information and resources on arts and culture.
4. Work in collaboration with community partners and arts organizations in facilitating high quality and diverse artistic programming and events.
5. Be a springboard of community engaged art.



A Brief History

Formerly known as the Community Arts Council for the Saanich Peninsula (CACSP), ArtSea has been a hub for cultural and artistic activities on the Peninsula since 1991. As a registered charitable organization, ArtSea offers an open membership to residents of the Saanich Peninsula and neighbouring communities.

ArtSea is governed by a volunteer Board of Directors and supported by dedicated staff and volunteers who work tirelessly to achieve its goals. Funding for ArtSea programs and operations is provided by municipal and provincial granting foundations, individual and corporate patrons, and self-generated income streams.

2024 ArtSea Board of Directors

ArtSea deeply appreciates the dedication of its board members, both past and present, and recognizes the vital role they play in the organization's success. Board members actively engage in meetings, contribute to decision-making, provide guidance, and support the organization's mission and strategic goals.

Ethel Mailhot, President

Ethel retired from the Saanich School Board after 35 years as teacher, councillor, and administrator. For the last 15 years, she has been a volunteer and co-ordinator for various ArtSea programs, including the Board of Directors, the Sidney Fine Art Show, Artisans, Arts in the School, Arts on the Pier, the Salish Sea Lantern Festival, and the Dianne Cross Awards for the Arts. Presently she is working with artists in promoting and maintaining the ArtSea Gallery in Tulista Park.

Wendy Woollard, Treasurer

ArtSea was pleased to welcome Wendy to the ArtSea Board of Directors at the recent ArtSea AGM in July 2023. Wendy began her involvement in the arts community after retiring from management in the insurance business. She specialized in fabric art, mainly southwest desert landscapes, for 12 years. With the onset of Covid-19, she began exploring acrylic painting, and currently "plays" with mixed media. Prior to joining the ArtSea board, Wendy was the Show Chair for SPAC, 2018-2022.

Patty Wilson, Vice-President (and Past President)

As Past President, Patty provides historical information, advice, and strategic direction. As a long-standing ArtSea executive, Patty has served in many areas of the organization including, ArtSea President, Director of the ArtSea Gallery in Tulista Park, and has been part of events including Artisans, Taste of Tulista and Small Expressions. Patty is a textile and visual artist.

Susan Irvine, Director

Susan joined the Board in 2018 and performed the role of Treasurer until the end of 2023. Susan has been instrumental in strategic planning, policy, financial reporting and administration. Susan was a senior strategic planner in the public sector before retiring.

Joanne Helm, Director

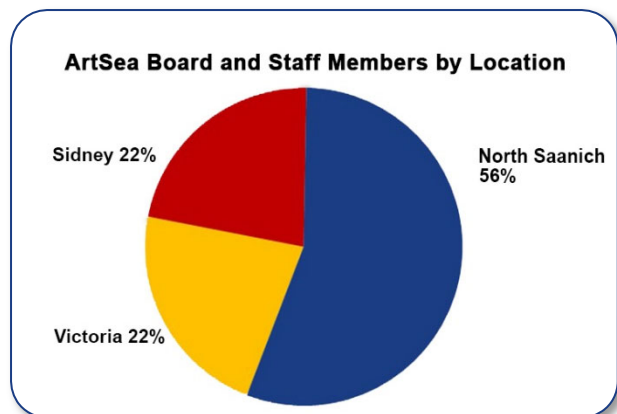
Joanne has a PhD from University of Calgary and worked as an educator for her career. She became a sculptor in 2015 and works very hard in many mediums but preferring clay to bronze. In addition to serving on the ArtSea Board of Directors in June 2023, she also works with other local not-for-profit arts groups.

Mary Philpott, Director

Mary moved to Central Saanich from Qualicum Beach with her husband to be closer to family after operating two successful businesses on the Lower Mainland. Now retired, she brings extensive volunteer experience including the Delta Hospital Foundation and Milner Gardens. Currently Mary serves as Secretary on her Strata Council and as an ArtSea Board Member.

Jenny Curtis, Interim Director

Jenny Curtis has a Bachelor of Science degree in Agriculture majoring in Horticulture and a Master's Certificate in Project Management. Jennifer retired from the BC Ministry of Agriculture where she held an Industry Specialist position for Greenhouse Vegetables, Mushrooms, Specialty Crops, Risk and Farm Business Management. More recently Jennifer held the General Manager position for the BC Chicken Growers' Association before relocating to Sidney BC in March 2024. Jennifer has been an ArtSea Gallery volunteer since April 2024 and is a current lead for the gallery volunteers and the Salish Sea Lantern Festival.



ArtSea Staff and Contractors

In 2024, a dedicated team of staff, contractors, and volunteers played a vital role in the continued success of ArtSea, ensuring the organization remains a vibrant cultural hub within the community.

Director of Programs and Communication (Full-time staff): Kirsten Norris

Kirsten has been with ArtSea since 2018, working closely with the Board of Directors to manage operations, budgeting, and strategic planning. She oversees internal and external communications, collaborates with program leads and community partners to execute events. Kirsten also leads marketing and public relations efforts and seeks grant funding to ensure the organization's financial sustainability.

Arts Coordinator (Part-time staff): Arabella Young

Arabella joined ArtSea in July 2022 and was essential in addressing service gaps within the organization. Arabella managed the ArtSea Gallery, supported the gallery team and weekly renters, and coordinated volunteers and members. Her efforts were key to success of ArtSea in 2024. Arabella resigned in November 2024. We are grateful for the passion and dedication she brought to ArtSea and will miss her contributions.

Media Coordinator (Part-time Contractor): Kari Frazer

Kari joined ArtSea in June 2023 and played a key role in updating and implementing our fundraising strategy. Her efforts in securing sponsorship support led to a 64% increase in sponsorship revenue in 2024. Kari also boosted the visibility of our programs through social media and public relations. Kari retired at the end of the year, leaving a lasting impact on ArtSea.

Artistic Director, the Salish Sea Lantern Festival (Seasonal Contractor): Jennifer Witvliet

Artistic Director Jennifer Witvliet and a dedicated team of volunteers plan and deliver the annual Salish Sea Lantern Festival. Jennifer started the first lantern procession in 2013, and the festival has since grown into a weeklong festival, culminating in an evening festival. Each year, the team assembles hundreds of jellyfish lantern kits, hosts lantern-building workshops, installs large-scale lantern displays throughout the region during the Week of Lanterns. The evening festival and parade along the Sidney waterfront is a highly anticipated community event.

Bookkeeper: Sue Cousins, Dollars and Sense Financial

Sue provides essential financial management services, ensuring accurate record-keeping, budget management, and financial reporting for ArtSea.

ArtSea Volunteers

ArtSea extends heartfelt gratitude to the dedicated volunteers whose generosity and commitment help shape the arts and culture landscape of our community. With the invaluable support of our Arts Coordinator, volunteer engagement saw a significant increase in 2024, as many individuals contributed their time and energy to bringing ArtSea programs and events to life.

In addition to the ArtSea Board of Directors, several ArtSea committees are essential to the planning and execution of programs in our region. These include the ArtSea Gallery, Salish Sea Lantern Festival, ArtSea Studio Tour, Sidney Art Walk, Sidney Seaside Sculpture Walk, Coast Capital Art Display, ArtSea Scholarship, Saanich Peninsula Arts and Culture Grant Program, and many other community initiatives held throughout the year.



Municipal Support and Council Liaisons

ArtSea is fortunate to have active participation from Council Representatives across the Saanich Peninsula municipalities during our monthly Board meetings. Their valuable insights and guidance contribute significantly to the success of ArtSea. Through their involvement, we are able to share updates and program information with the broader community. We deeply appreciate their continued support and their vital role as ambassadors for arts and culture in our region.

A special thank you to Councillor Terri O'Keeffe (Town of Sidney), Councillor Bob Thompson (District of Central Saanich), and Councillor Marshall (District of North Saanich), for their ongoing dedication.

ArtSea values its strong collaborative partnership with the municipalities on the Saanich Peninsula. The Town of Sidney and the District of North Saanich continue to provide essential annual funding to support the core services that ArtSea delivers to the community. In addition, the Town of Sidney generously provides storage and meeting space for ArtSea, as well as the ArtSea Gallery building, a crucial hub for arts and culture in our region. The Town of Sidney staff have also consistently gone above and beyond in supporting ArtSea and the Tulista Park facility. In 2024, ArtSea received funding from the District of Central Saanich through a new four-year funding agreement to support our programming.



ArtSea Membership

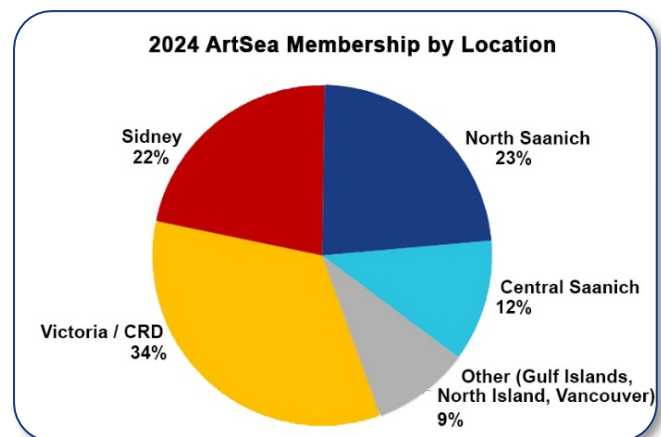
ArtSea welcomes individuals, artists, arts and cultural groups, businesses, and organizations to become members. By joining ArtSea, members gain access to a variety of benefits designed to support and connect members with the local arts community.

Being a member of ArtSea offers valuable opportunities to participate and collaborate with fellow artists, cultural organizations, and community members, fostering collaboration, creativity, and exposure within the local arts scene. Additionally, ArtSea provides advocacy at the local government level, and opportunities to engage in community initiatives like volunteering and public art projects.

Membership includes:

- A profile page on the ArtSea website.
- Access to a range of registered and community programs and events throughout the year.
- The ability to rent the ArtSea Gallery for workshops, classes, or exhibitions
- The opportunity to apply for Saanich Peninsula Arts and Culture Grants
- A subscription to the monthly ArtSea newsletter

ArtSea Members contribute to the vibrancy and growth of arts and culture on the Saanich Peninsula, and beyond, helping to make the region an even more exciting and creative place to live.



ArtSea Strategic Plan Update

In 2024, the ArtSea Board and staff remained committed to pursuing the key goals outlined in our Strategic Plan.

1. Build Organizational Capacity

In 2024, ArtSea continued to strengthen its organizational capacity through strategic planning, financial stewardship, and community engagement. The ArtSea Board and staff engaged in an annual strategic planning process to define clear goals and action plans aligned with the mission and vision of ArtSea. These efforts ensured that programs remained responsive to community needs while maintaining long-term sustainability.

ArtSea prioritized financial transparency and accountability, with the Board and accounting team overseeing budgeting, financial reporting, and risk management. The organization also expanded partnerships with local organizations, funders, and government agencies, leveraging resources and expertise to enhance program delivery and outreach. Highlights included recruiting new board members with diverse backgrounds in arts administration, finance, and community development to guide strategic decisions; implementing a volunteer appreciation program with recognition events and professional development opportunities; and applying for and securing new grants from local government, private foundations, and corporate sponsors to support key initiatives like the Salish Sea Lantern Festival.

2. Diversify and Increase Resources

In 2024, ArtSea remained dedicated to securing diverse funding sources to sustain programs and operations. Staff devoted significant time and effort to grant applications, reporting, and sponsorship outreach, ensuring continued financial support despite increasing funding challenges. ArtSea successfully pursued funding from federal, provincial, and local sources, including:

- Municipal Core Funding: Town of Sidney, District of North Saanich, and District of Central Saanich (Community Service Funding 2024–2027).
- Provincial & Federal Grants: BC Arts Council (core funding), BC Fairs Festivals and Events Grants (Salish Sea Lantern Festival, ArtSea Studio Tour).
- Community & Foundation Grants: Saanich Peninsula Community Foundation (Salish Sea Lantern Festival), Victoria Foundation (core programs and operations), and United Way UWSVI Programs and Services Grant.

ArtSea also expanded its sponsorship and donor engagement strategy, building on the President’s Circle sponsorship program introduced in 2023. Sponsorships and donations—both cash and in-kind—played a vital role in sustaining programming, particularly as less grant funding was awarded for arts and culture programs.

Strategic partnerships with local businesses, organizations, and government agencies continued to be essential in enhancing the reach and impact of ArtSea programming. Notable collaborations included:

- The Saanich Peninsula Arts and Culture Grant Program (SPACG): In partnership with the Town of Sidney and District of North Saanich, ArtSea administered this funding stream to support local arts and culture initiatives.
- Sidney Art Walk: In collaboration with Sidney BIA, ArtSea Members displayed and sold artwork in retail locations across Sidney.
- Community Program Expansion: Partnering with the Sidney Events Advisory Group (SEAG) to explore enhanced program delivery and cross-promotion of local events.



- Public Art Displays: Featuring ArtSea Member artwork at Coast Capital locations (Sidney & Shelbourne Street, Victoria).
- Creative Community Engagement: Collaborating with Panorama Recreation Centre and McTavish Academy of Art on programs like the “Garden Door Challenge” for World Art Day.
- Sponsorships, as well as cash and In-kind contributions were critical to the success of the Salish Sea Lantern Festival, with donations from local businesses, including Sidney BIA, Peninsula Co-op, Thrifty Foods, The Rotary Club, Holmes Realty, St. Andrews Church, The Print Lab, Shaw Centre for the Salish Sea, Panorama Recreation, McTavish Academy of Art, Island Blue, Buddies Toys, The Brentwood Bay Village Emporium, Victoria Box and Paper, Peninsula News Review, and Seaside Magazine.

While program revenue remains an essential income source, ArtSea continues to subsidize costs to minimize barriers and ensure community accessibility. In 2024, ArtSea program revenue included ArtSea Membership fees, ArtSea Studio Tour participant registration fees, ArtSea Gallery rental fees, and sales of merchandise such as Jellyfish Lantern Kits.

3. Improve Communications and Engagement

In 2024, ArtSea continued to enhance communications and community engagement, reinforcing its commitment to transparency, accountability, and outreach. The PR and Fundraising Contractor played a key role in expanding our social media presence, increasing engagement with followers and broadening awareness of programs and initiatives. With the support of the ArtSea Gallery Team, the monthly electronic newsletter readership grew to over 1,150 subscribers, keeping the community informed about upcoming events, programs, and opportunities. ArtSea also prioritized website enhancements and maintenance, ensuring it remained a user-friendly, accessible platform for program details, event updates, and community resources.

ArtSea continued to welcome municipal representatives from the Town of Sidney, the District of North Saanich, and the District of Central Saanich to monthly Board meetings, further reinforcing community connections. These regular discussions facilitated information sharing and provided valuable feedback from key stakeholders, ensuring ArtSea programs remained responsive to community needs and priorities.

4. Ensure Sustainability

In 2024, ArtSea remained focused on long-term sustainability through flexible programming, sound financial management, and strategic resource allocation. To ensure continued financial stability, funds previously reserved for a future building fund were reallocated to general savings, allowing for greater adaptability to meet operational needs.

Recognizing the importance of strong governance and leadership, ArtSea actively recruited new volunteers and Board members, strengthening its capacity to oversee programs and initiatives. Additionally, ArtSea pursued numerous funding opportunities to enhance both program and administrative capacity, ensuring the delivery of high-quality arts and cultural programming.

5. Broadening the Audience and Artistic Offerings

In 2024, our commitment to community-driven programming remained at the forefront, with ArtSea actively refining feedback mechanisms to ensure that programs aligned with participant needs and preferences.

ArtSea also prioritized inclusivity, ensuring that free or highly subsidized programs and events remained accessible to individuals facing barriers related to disability, language, or financial constraints. Additionally, ArtSea revised the Saanich Peninsula Arts and Culture Grant (SPACG) program guidelines, further enhancing accessibility to funding opportunities for arts and cultural initiatives. These efforts contributed to a more vibrant, diverse, and engaged cultural landscape within the community.

Resources for ArtSea Members and the Greater Community

ArtSea Website

ArtSea prioritizes the development and maintenance of its website, recognizing it as a central hub for information, engagement, and community resources. The website offers comprehensive access to programming, exhibitions, and events, while also providing insights into the history, mission, and mandate of ArtSea. Visitors can explore opportunities to become an ArtSea Member or volunteer, access grant applications, and find details about ArtSea Gallery rentals.

Interactive features such as the ArtSea Studio Tour participant map and the ArtSea Membership Directory showcases local artists and their work. Additionally, the website provides free arts resources, including lantern-building tutorials for events like the Salish Sea Lantern Festival, and information about the ArtSea Scholarship Program. Visitors can also sign up for the ArtSea newsletter or make a donation to support local arts and culture.

ArtSea Membership Profiles

ArtSea offers free web space to hundreds of local artists and artisans, providing them with an online platform to network, share information, and showcase their work. Members can create profiles featuring biographical details, contact information, and curated galleries of their artwork, increasing their visibility within the arts community.



Social Media

ArtSea maintains an active presence on social media, including Facebook and Instagram with regular updates about exhibitions, program registrations, artist calls, and upcoming events. The organization also promotes grant and bursary funding opportunities, fosters community engagement, and cross-promotes initiatives by local and regional partners and arts organizations.

In addition, ArtSea hosts a YouTube channel featuring Salish Sea Lantern Festival tutorials and artist videos, making arts and culture content more accessible to a broad audience. These resources can be easily accessed via the ArtSea website or directly on YouTube.

ArtSea Newsletter

The ArtSea electronic newsletter is published monthly and was distributed to a growing audience of more than 1,100 active subscribers in 2024, offering updates on ArtSea programs, artist opportunities, exhibitions, and community events. It also highlights news from ArtSea members and partners, using engaging visuals, information, and relevant links to keep subscribers informed.

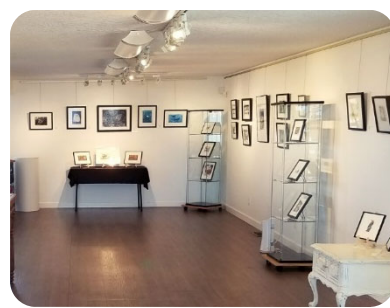
2024 ArtSea Newsletter Highlights:

- Over 1,100 active subscribers in 2024.
- Expands its reach through the ArtSea website and social media.
- Cross-promotes local and regional community initiatives.
- Funded through the ArtSea annual budget.

ArtSea continues to enhance accessibility, foster collaboration, and support the arts community across the region through the website, membership profiles, social media, and newsletter.



ArtSea Gallery in Tulista Park



The ArtSea Gallery in Tulista Park: 9565 Fifth Street, Sidney BC V8L 1T3

Nestled along the scenic waterfront walkway in Sidney, BC, the ArtSea Gallery remains a cherished cultural hub for local artists and an invaluable asset to the community. In 2024, the gallery continued its tradition of offering ArtSea Members a dynamic platform to showcase their work through exhibitions, workshops, and classes.

From the beginning of March through the end of December, the ArtSea Gallery was fully rented for one-week artist-directed exhibitions, providing opportunities for over 150 artists and artisans to share their creations with the public. These exhibitions, which spanned assorted art forms and styles, enriched the local cultural scene, fostering creativity and community engagement.

2024 ArtSea Gallery in Tulista Park Highlights:

- For the second consecutive year, the ArtSea Gallery was voted #1 Gallery on the Saanich Peninsula by readers of the Peninsula News Review.
- The gallery hosted over 20,000 visitors in 2024, highlighting the community's strong support for local arts.
- A total of 42 weeks were rented for artist-directed exhibitions, providing ample opportunities for local artists to display and sell their work commission-free.
- More than 150 artists and artisans, representing diverse backgrounds and equity-deserving groups, participated in group or solo shows.
- ArtSea Gallery exhibition participation by location: 20% Sidney, 11% North Saanich, 7% Central Saanich, 53% Victoria, 9% Other (Gulf Islands and North Island).

In addition to regular exhibitions, the gallery's "Art on the Deck" program, presented during the January and February closure, provided a space for local artists to showcase their work in the gallery windows. This free program, open to ArtSea members, allowed the public to engage with art in a safe and accessible manner, with no display fees or commissions on sales.

- Art on the Deck participation by location: 27% Sidney, 36% North Saanich, 14% Central Saanich, 18% Victoria, 5% other (Gulf Islands and North Island).

During the winter closure, the ArtSea Gallery team also conducts essential cleaning and maintenance on both the gallery space and the administrative office, ensuring the space remains in top condition for the year ahead.

The ArtSea Gallery is fortunate to operate within the unceded territory of the Coast Salish People – within the traditional territory of the W̱SÁNEĆ Nation – Pauquachin, Tsartlip, Tsawout and Tseycum peoples.

Gallery Operations & Support

The gallery's operational success was made possible thanks to the dedication and commitment of a team of volunteers, led by the ArtSea Gallery Director and Arts Coordinator. This incredible group—including Ethel Mailhot, Kathy and Peter Demchuk, Jenny Curtis, Donna Marie Pitcher, Norah Brown, Sharron MacBride, Lynda Baker, Sally Chupick, Sharon Hetherington, Robyn Moran, Hope Hilliard, Marian Flodin, Linda Chambers—played an essential role in ensuring smooth operations, welcoming community members as gallery hosts, and supporting incoming and outgoing gallery renters.



Thank you to the ArtSea Volunteers

In 2024, ArtSea was able to invest in new equipment for use in the ArtSea Gallery, Thanks to a generous donation from Peninsula Co-op in late 2023. This new equipment was made available for use during exhibitions and workshops, exclusively within the ArtSea Gallery facility, including:

- Exterior Signage – lightweight and portable signs that can be placed along Lockside Trail and the Sidney Waterfront Walkway to increase visibility and attract visitors to gallery exhibitions.
- Maple Risers/Plinths (Six total) - elegant white maple plinths, perfect for displaying art and creating an enhanced presentation for sculptures or other small artworks.
- Acrylic Card Holders (Four total) - Ideal for displaying information cards or small prints.
- Chairs for Gallery Renters and Visitors - seating for gallery visitors and exhibitors to ensure a welcoming and comfortable environment.
- Glass Showcase (ArtSea Area) – to display small works by new ArtSea Members and ArtSea volunteers, the Glass Showcase is part of the ArtSea Area in the gallery and is curated by ArtSea Volunteers.
- Storage Rack for Plinths - this movable rack is kept in the ArtSea Gallery's storage room for storing plinths.



Thank you to Peninsula CO-OP for the generous donation!



The ArtSea Gallery's operational costs are sustained through gallery rental income and funds from the annual budget, supported by the Town of Sidney, the District of North and Central Saanich, and the Government of BC. These funds are essential to ensuring the gallery remains a valuable community resource.

ArtSea Gallery Testimonials from Exhibitors

The ArtSea Gallery is very important because it's an easy access venue for people to feature their art and for people visiting to enjoy it. "Diverse Threads," Nov 15- 21, 2024

It's amazing! What a huge opportunity for so many artists to get seen throughout the year! I think very few communities have something like this. It was my best sales venue of the year too. With dwindling numbers of shows, a space like this is incredibly important. "From Stable to Sea and Everything in Between", Oct 25, 2024

ArtSea Gallery is an extremely important resource for both local artists and the community. We met many local residents who come to the gallery regularly to see the shows and who expressed enjoyment of the experience. As for local artists, we consider ourselves very fortunate to have such an attractive and good-sized gallery available at an affordable price and we also appreciate the other benefits offered such as advertising and providing much of the needed display equipment. "Something for Everyone" Exhibitors, Oct 11-17, 2024

I think the Gallery fills a very real need for local artists to display their work and it would be a shame if it wasn't there. "Deep Cove Weavers and Spinners", Oct 4 - 10, 2024

We spoke with so many regulars to the gallery who have made ArtSea part of their weekly outing.. "New Works by Allison Brodie & Carolyn Houg" Sept 20-26, 2024

I think it is a very important and wonderful resource for local artists and visitors alike. I really love the ArtSea Gallery building and all that is included for the artist's use during their exhibition. The staff and volunteers are all very helpful and kind and are an asset to the organization. "Tides of Creativity Expressions Art Show. Sept 6-12, 2024

It is so important to have a facility like ArtSea where "non-professional" and hobby artists can show their art in a gallery setting at an affordable rental price. "Four Friends Having Fun" Exhibitors Aug 30 - Sept 5, 2024

I think it's very important to have this facility available to both local artists and the community/ public . We need places like this to keep the Arts alive and engage the local community. "All paintings Great and Small" Exhibitors, Aug 23-29, 2024

[We] were very impressed with all that the ArtSea Gallery offers to the Sidney community and beyond, and also for local artists. SO many people who came to see our exhibition told us that they usually come every week to enjoy the current exhibition, and really value the ArtSea Gallery being located in such a convenient and pleasant location. It is also accessible to those with mobility issues who need to use walkers or wheelchairs. Bravo! "Creation" Exhibitors, July 26-Aug 1, 2024

I was impressed with how the gallery was a weekly destination for the local walkers and a destination for other residents further afield. It is a great model for showing artist led exhibitions. The building and whole facility is clean and bright and has a friendly and inclusive ambience and is well supplied with essentials. "Constant Miracles" Exhibitors, July 19 - 25, 2024

The ArtSea Gallery is a must for the community and local artists. There is nothing else like it. ...the grounds are well maintained and it's just a beautiful place to visit. I was amazed by the amount of visitors and how nice everyone was. The location was great, nice to have bathrooms next-door, lots of parking and wheelchair parking was great as there was a lot of people with mobility issues. "West Coast Tugboat Project" Gallery Show, June 28 - July 4 2024

The ArtSea Gallery is a perfect venue for us, and it gets better all the time. The ArtSea Gallery has a wonderful presence in our community, and it attracts both tourists and greater Victoria residents to its shows. "The Beauty of Nature" Exhibitors, July 5-11, 2024

As a New comer to Sidney the gallery has become a regular part of our lives, as we saw with other walkers, bikers, care home residents on a day trip...it's an important part of life on the peninsula.

"Surfacing" Exhibitors, April 26-May 4, 2024

The Salish Sea Lantern Festival



The Salish Sea Lantern Festival is a cherished annual event that brings the community together through art, culture, and illumination. Leading up to the 2024 festival, residents and visitors took part in lantern-building workshops and online tutorials or purchased lantern kits to craft their own handmade lanterns. During the Week of Lanterns, the community enjoyed stunning professional installations alongside lantern displays created by businesses, neighbourhoods, and families. On August 24, 2024, thousands gathered for the evening festival, which featured live performances and activities for all ages, and a magical lantern parade along the waterfront in Sidney.

2024 Salish Sea Lantern Festival Highlights:

- Over 2,000 residents and visitors enjoyed the evening festival, complete with live music, family-friendly activities, and a magical lantern parade.
- Hundreds of people took part in workshops—both in person and online—crafting unique lanterns that added to the festival’s beauty.
- More than 20 large-scale lantern displays, featuring Salish Sea creatures, lit up the Peninsula, sparking wonder and community pride.
- More than 350 jellyfish and memory lantern kits were made available, filling the community with glowing, creative spirit during the Week of Lanterns.
- Over 200 handmade lanterns brightened local businesses and organizations, showcasing the creativity and connection that define our community.
- A dedicated team of 10, plus staff and Board members, worked tirelessly to coordinate this magical experience.
- 25 community partners and 50+ volunteers, alongside 12 artists and several performers, came together to make the festival a success.



Impact on the Community:

The success of the Week of Lanterns and the Evening Festival was made possible by the year-round dedication of Artistic Director Jennifer Witvliet and a small but passionate team of volunteers: Heather Priest, Eloise Meredith, Vicki Wallace, Sylvia Maddocks, Hope Hilliard, and Jenny Curtis. This incredible group works tirelessly to plan events, design costumes, create and repair lanterns, and assemble lantern kits. Thanks to their commitment—and the support of ArtSea, local businesses, and community members—the festival celebrated the region’s rich cultural heritage and vibrant arts scene.

Sustainability and Funding:

The Salish Sea Lantern Festival and Week of Lanterns are free community events, made possible by funding from the ArtSea annual budget and grants from the Province of BC. We are also grateful for our festival partner, the Sidney BIA, for sponsoring the evening entertainment, organized the lantern installation in Garden Court, providing poster printing and other and in-kind support.

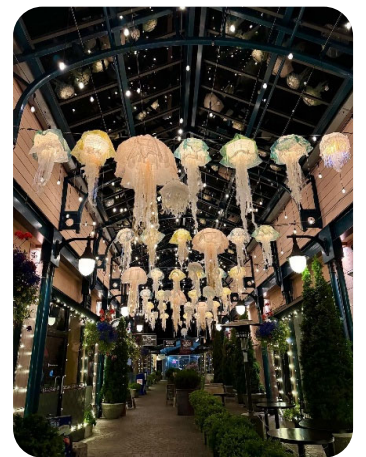
In 2024, sponsorships were vital to the success of the festival, with special thanks to our generous Lead Sponsor, The Henderson Family. We also express our gratitude to our President’s Circle sponsors, including the Peninsula Co-op, The Homes Realty Group, The Rotary Club of Sidney by the Sea, Thrifty Foods, and the Print Lab. In-kind sponsors, such as the Shaw Centre for the Salish Sea, St. Andrews Church, The Sidney and North Saanich Library, Panorama Recreation Centre, McTavish Academy of Art, Star Cinema, Buddies Toys, the Brentwood Bay Village Empourium, Seaside Magazine, Victoria Cup and Paper also helped bring this beloved event to life and ensure its continued impact on our community.



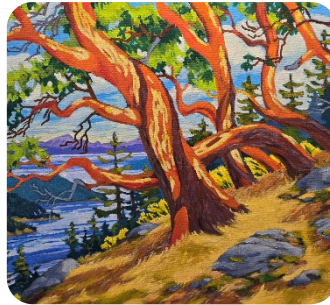
Photo Credit: NearMe Victoria



Photo Credit: Brenda B. Belay



The ArtSea Studio Tour



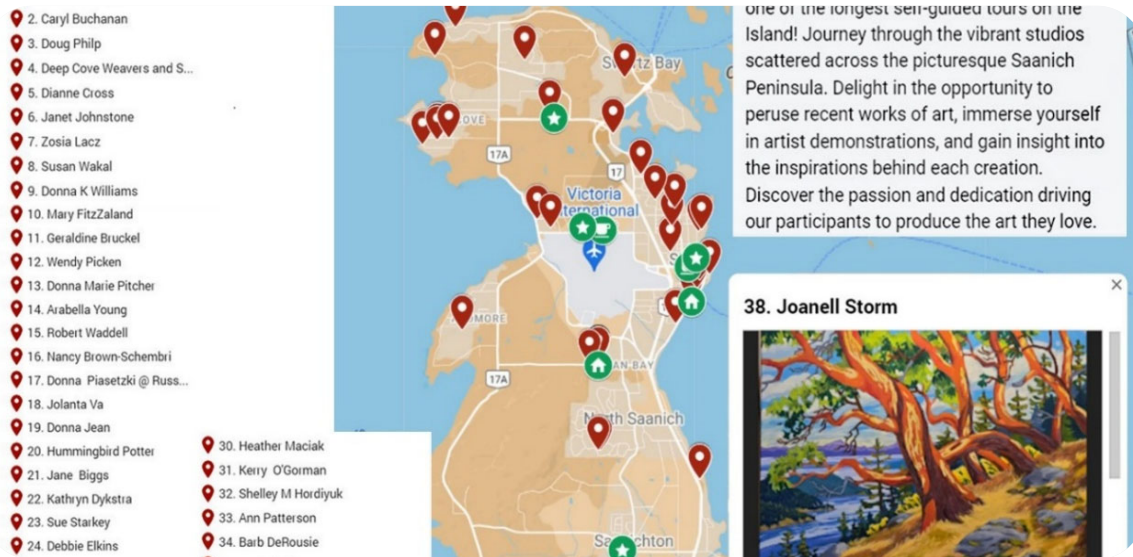
2024 ArtSea Studio Tour: studio photo by Brenda Belay, participant artwork, Caryl Buchanan (top), Joannell Storm (middle), Wendy Picken (right).

The ArtSea Studio Tour continues to be one of the longest-running self-guided studio tours on Vancouver Island, celebrating the 30th anniversary this year. The 2024 event invited art enthusiasts and curious visitors to embark on a journey through the private studios of over 40 local artists, offering a unique opportunity to witness the creative process firsthand and connect with the artists on a personal level.

2024 ArtSea Studio Tour Program Highlights:

- The 2024 ArtSea Studio Tour marked the 30th anniversary of the program, highlighting the enduring legacy of this cultural celebration.
- Forty talented artists and artisans participated in the Studio Tour, offering a diverse range of artistic disciplines, from painting and sculpture to ceramics and photography.
- Hundreds of visitors explored various studio locations across the Peninsula, with between 70 to 200 visitors attending each studio per day, fostering meaningful connections between artists and the community.
- An interactive Google map was available to guide visitors, with over 12,500 views, making it easier for people to view artist details and selected images, plan their travels, and explore studios at their own pace.
- Over 2,000 printed guides were distributed to locations across the Peninsula and Greater Victoria, providing essential information for those without internet access.
- ArtSea Studio Tour participation by location: 29% Sidney, 42% North Saanich, 13% Central Saanich, 16% Victoria.

The 2024 ArtSea Studio Tour featured an impressive lineup of artists, showcasing a dynamic range of artistic works that inspired visitors of all ages. The tour took participants on a self-guided journey through the beautiful landscapes of the Saanich Peninsula, uncovering hidden gems tucked away in local studios and creative spaces.



2024 ArtSea Studio Online Interactive Studio Tour Guide (Google Maps)

Throughout the tour, artists shared their creative processes, demonstrated their techniques, and discussed the inspirations behind their works. Beyond cultural enrichment, the Studio Tour had a positive economic impact on the region. The influx of visitors from near and far supported local businesses, especially food establishments and retail shops, as many visitors extended their stay to explore the area further.

The success of the Studio Tour was made possible by the dedication of Volunteer Program Lead Wendy Picken and Ray, and a small team of participants and volunteers, as well as the talented artists who opened their studios and shared their creativity with the public.

The ArtSea Studio Tour is a registered participant program, funded in part by participant registration fees, supplemented by the ArtSea annual budget, and in 2024 a small grant from the BC Fairs, Festivals, and Events Program.

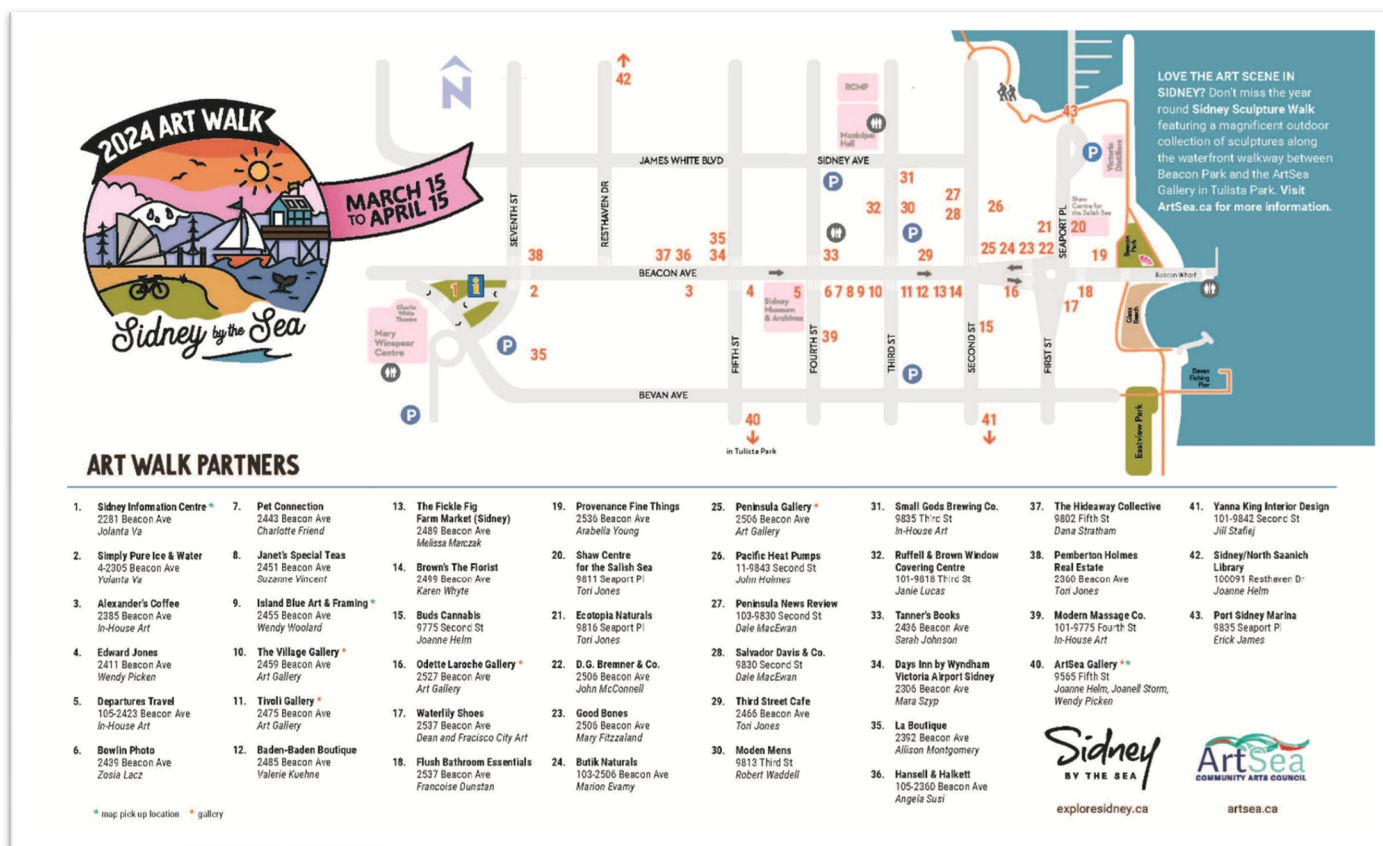
2024 ArtSea Studio Tour
October 5th & 6th, 2024 10AM - 4PM
More info: artsea.ca or use the QR code to view the online map

2024 ArtSea Studio Tour Participant Locations
More info: artsea.ca, or use the QR code to view the online map

Celebrating 30 Years!
The ArtSea Studio Tour is one of the longest running self-guided studio tours on Vancouver Island. Journey through the vibrant studios scattered across the picturesque Saanich Peninsula. Delight in the opportunity to view recent works of art, immerse yourself in artist demonstrations, and gain insight into the inspirations behind each creation. Discover the passion and dedication driving our participants to produce the art they love.

1. Rebecca Trapp 8325 Lochside Dr. Saanichton	14. Arabella Young 2090 Vallis Place Sidney	27. Terri Haines 1295 Tapping Rd. North Saanich
2. Caryl Buchanan 8325 Lochside Dr. Saanichton	15. Robert Waddell 10491 Resthaven Dr. Sidney	28. Kerry Fleetwood 1367 Sangster Rd. North Saanich
3. Doug Philp 9679 Frost Ave Sidney	16. Nancy Brown-Schembri 1817 Marina Way North Saanich	29. Penny Baziuk 1720 McTavish Rd. North Saanich
4. Deep Cove Weavers & Spinners 9565 Fifth Street Sidney	17. Donna Piasetzki 1370 Wain Rd. North Saanich	30. Heather Maciak 1720 McTavish Rd. North Saanich
5. Dianne Cross 9600 Third Street Sidney	18. Jolanta Va 11160 Greenpark Dr. North Saanich	31. Kerry O'Gorman 1720 McTavish Rd. North Saanich
6. Janet Johnstone 9600 Third Street Sidney	19. Donna Jean 11278 Acorn Place North Saanich	32. Shelley M Hordiyuk 1720 McTavish Rd. North Saanich
7. Zosia Lacz 9679 Third Street Sidney	20. Hummingbird Potter 672 Kitwanga Place North Saanich	33. Ann Patterson 1720 McTavish Rd. North Saanich
8. Susan Wakal 9740 Eastview Dr. Sidney	21. Jane Biggs 11362 Chalet Rd. North Saanich	34. Barb DeRousie 1720 McTavish Rd. North Saanich
9. Donna K. Williams 10107 Third Street Sidney	22. Kathryn Dykstra 10692 Madrona Dr. North Saanich	35. Rachel Piluso 1720 McTavish Rd. North Saanich
10. Mary FitzZaland 539 Shoreacres Rd. Sidney	23. Sue Starkey 539 Downey Rd. North Saanich	36. Lesia Hyzka 1756 Spieden Pl. North Saanich
11. Geraldine Bruckel 539 Swiftsure Pl. Sidney	24. Debbie Elkins 539 Downey Rd. North Saanich	37. Françoise Dunstan 1756 Spieden Pl. North Saanich
12. Wendy Picken 10131 Pleasant St. Sidney	25. Tori Jones (Saturday only) 539 Downey Rd. North Saanich	38. Joannell Storm 1129 Lucille Dr. Brentwood Bay
13. Donna Marie Pitcher 10239 Cleveland Rd. Sidney	26. Paul Harder 612 Downey Rd. North Saanich	39. Jin Chung 733 Dakshin Ave North Saanich

The Sidney Art Walk



2024 Art Walk Brochure – printed and distributed by the Sidney BIA

In 2024, ArtSea partnered with the Sidney Business Improvement Area (BIA) to present the 4th annual Sidney Art Walk, a dynamic program that brought art to 43 locations throughout the Town of Sidney. With 22 ArtSea members participating, the event transformed the town into an open-air gallery, celebrating the creative talent in our region and inviting residents and visitors to engage with local art in community spaces. The Art Walk featured a wide range of 2D and 3D works, including paintings, sculptures, pottery, glass, woodwork, photography, and mixed media pieces, transforming storefronts and community spaces into lively art installations.

2024 Sidney Art Walk Highlights:

- 22 ArtSea members showcased their work across 43 locations throughout the town.
- Art displays included an assortment of artistic expressions, from visual art to handcrafted pieces.
- The event helped drive traffic to participating businesses and enriched the local arts scene.
- Funded primarily by the Sidney Business Improvement Area (SBIA) and supported by ArtSea, this collaboration continues to celebrate the creativity and cultural vitality of Sidney.
- ArtSea Studio Tour participation by location: 33% Sidney, 23% North Saanich, 8% Central Saanich, 34% Victoria, 2% Other (Gulf Islands).

The Sidney Art Walk remains a vital part of Sidney's arts and culture scene, connecting artists, businesses, and the community through a shared appreciation for creativity.

Sidney Seaside Sculpture Walk



The Sidney Seaside Sculpture Walk – a sample of sculptures included on the sculpture walk

The Sidney Seaside Sculpture Walk (SSSW) continues to be a captivating outdoor art gallery along the waterfront walkway in Sidney, BC, offering stunning views of Mount Baker and the Salish Sea.

Since 2019, ArtSea has partnered with the Town of Sidney under a Memorandum of Understanding (MOU) to revitalize the walk, facilitating the acquisition of several impactful sculptures. In 2024, ArtSea completed the purchase of *The Muse*, by Louis-Marc Simard, the final sculpture to be acquired under the MOU. This acquisition marks the conclusion of ArtSea efforts to secure the collection with sculptures previously available for sale or removal.

With the MOU concluding in May 2024, ArtSea takes pride in its role in fostering public art appreciation and community engagement along Sidney's picturesque waterfront.

2024 Sidney Seaside Sculpture Walk Highlights:

- ArtSea has facilitated the acquisition of eight sculptures, with the latest being *The Muse*, by Louis-Marc Simard.
- Informative plaques accompany most sculptures to enhancing visitors' experience of the artwork.
- Annual funding from the Town of Sidney helped to support costs associated with the administration of the sculpture walk. The MOU officially concluded in May 2024.

The Sidney Seaside Sculpture Walk remains an enduring symbol of the collaboration between ArtSea, the Town of Sidney, and the community, promoting public art and fostering creativity along the waterfront.

Saanich Peninsula Arts and Culture Grant Program



A Sample of 2024 SPACG Recipients: Seaside Folk n Fiddle Festival (top) & Island Echo Women's Community Choir (bottom)

In 2024, ArtSea enhanced the accessibility of the Saanich Peninsula Arts and Culture Grants and Bursary (SPACG) Program by transitioning to accept year-round applications, making it easier for local artists and cultural organizations to access funding throughout the year. This change allowed ArtSea to provide more timely support to a broader range of initiatives across the region, further nurturing the vibrancy of the arts and culture community on the Saanich Peninsula.

Thanks to the generous funding from the Town of Sidney and the District of North Saanich, ArtSea awarded a total of \$31,530 in grants and bursaries to support local arts and culture initiatives in 2024. These funds were directed toward a variety of projects across several artistic disciplines, including performing and visual arts, literary arts, and community-based cultural initiatives. This vital program continues to empower local creatives and foster community engagement, ensuring that the arts remain accessible and thriving in our region.

ArtSea is grateful to all the applicants who shared their creative projects with the community, as well as the dedicated grant adjudication panel of experts who reviewed the proposals and selected the grant recipients. Their collective efforts have contributed to the success of the program and the flourishing arts and culture scene on the Saanich Peninsula.



Sidney



2024 SPACG Grants and Bursary Recipients:



Folk & Fiddle Festival: Awarded funding to provide music in the form of concerts, with more than 21 performances across three stages around Sidney including four gala performances in The Charlie White Theatre at The Mary Winspear Centre.



The Via Choralis Performance Society: Awarded funding to provide a high-quality choral performance of songs from Broadway musicals and similar repertoire, with an interlude of music performed by a professional musician.



The Sidney and Peninsula Literary Society: Awarded funding to support the 2024 Spring and Fall Reading Series for 2024, which provide an opportunity for attendees to engage with authors, purchase their works and gain a greater insight into the rich presence of Canadian authors living locally.



Eine Kleine Summer Music: Awarded funding to support the presentation of four summer concerts, performed at the highest artistic level, by local, provincial, national, and international musicians in dynamic and memorable concerts for our audiences. The desire is to make chamber music less intimidating and more accessible to a greater audience.



Canadian Light Music Society - The Palm Court Light Orchestra: Awarded funding to present light orchestral music concerts, providing nostalgic and educational experiences for the Sidney audience.

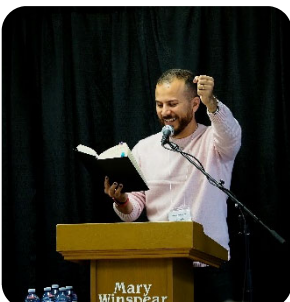
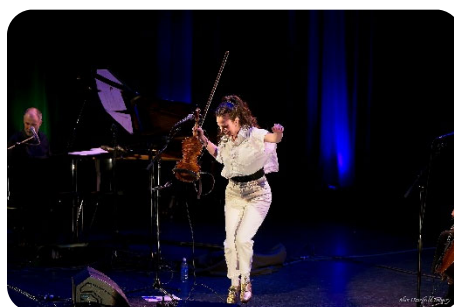


Island Echo Song Choir. Awarded SPACG funding to support choral performances at local charity events, fundraisers, and local events and festivals.



Deep Cove Folk: Awarded funding to support the development and distribution of a book of “songs of place” set on the Saanich Peninsula. *Saanich Songs* will be a digital volume full of songs written about and by our community. It will showcase and support not only our local songwriters but also some of our artists and photographers offering support and visibility to many of our local creative folk and contribute meaningfully to our cultural lives.

This Saanich Peninsula Arts and Culture Grant program is administered by ArtSea Community Arts Council and adjudicated by a team of ArtSea volunteers. The costs associated with the administration of the SPACG program are covered by the ArtSea annual budget. Funding for the grants and bursaries is generously provided by the Town of Sidney and the District of North Saanich. Together, we are pleased to support initiatives that will enrich our communities and add to the local arts and cultural ecosystem.



ArtSea Scholarship: Dianne Cross Award for the Arts



Abbie Mellings



Daniel Rogers

In June 2024, ArtSea proudly presented the ArtSea Scholarship, The Dianne Cross Award for the Arts, to two exceptional students from School District 63. Congratulations to Abriella Mellings from Claremont Secondary School and Daniel Rogers from Stelly's Secondary School. Both students demonstrate remarkable creativity and dedication to their craft, and ArtSea is excited to support their continued artistic growth.

The Dianne Cross Award for the Arts is designed to assist young artists in pursuing post-secondary education and further developing their artistic skills. The scholarship provides financial assistance to help cover educational fees and support the ongoing artistic journeys of promising individuals.

2024 Scholarship Recipients:

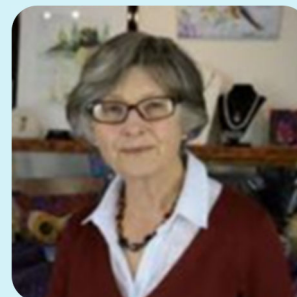
- Abriella Mellings, Claremont Secondary School, is a talented artist with a passion for theatre, pictured above as Hope Harcourt in *Anything Goes*.
- Daniel Rogers, Stelly's Secondary School, is a budding artist with a bright future ahead.

Both recipients aspire to pursue undergraduate degrees in art, with Abriella looking to become an art and sewing teacher and Daniel focused on furthering his artistic talents. ArtSea extends its heartfelt congratulations to both recipients as they embark on their educational journeys, and we wish them great success and fulfillment in their artistic pursuits.

The ArtSea Scholarship is funded through program revenue generated by ArtSea, including proceeds from ArtSea Memberships and ArtSea Gallery Rentals. This initiative reflects a commitment by ArtSea to nurturing the next generation of artists and fostering a rich and diverse arts community on the Saanich Peninsula.

The ArtSea Scholarship is named in honor of Dianne Cross, one of the founders of ArtSea Community Arts Council, the award recognizes her significant contributions to arts and cultural activities on the Peninsula.

Dianne remains an active member of the arts community and plays a vital role in the selection process for the scholarship fund.



World Art Day, Community Garden Door Challenge



In April and May 2024, McTavish Academy of Art and Panorama Recreation Centre celebrated World Art Day with a community program inviting all ages to decorate small garden doors. McTavish Academy provided templates, and participants could decorate at home or during a free workshop. ArtSea is grateful to McTavish Academy, Panorama Recreation Centre, and the community for their support.

2024 World Art Day, Garden Door Challenge Highlights:

- Over 60 creative garden door entries displayed at Panorama Recreation Centre.
- “Family and Friends” category winner chosen by the community.
- “Business” category winner selected by local businesses and organizations.
- Proceeds donated to the Salish Sea Lantern Festival.

Coast Capital Artwork Display



Coast Capital Savings, Sidney Branch

ArtSea Member artwork Jennifer Anderson

In 2024, ArtSea continued its partnership with Coast Capital Savings to showcase ArtSea Members’ artwork, with no registration or commission fees. Local artists like Jennifer Anderson (pictured above) shared their creations, supported by a dedicated volunteer team—including Keith Levang, Geri Levang, and John Maloney—who managed submissions, communications, and curation.

2024 Coast Capital Artwork Display Program Highlights:

- Large-scale artworks displayed at Sidney by the Sea and Shelbourne, Victoria.
- 20-40 local artists participated, displaying recent works for three months.

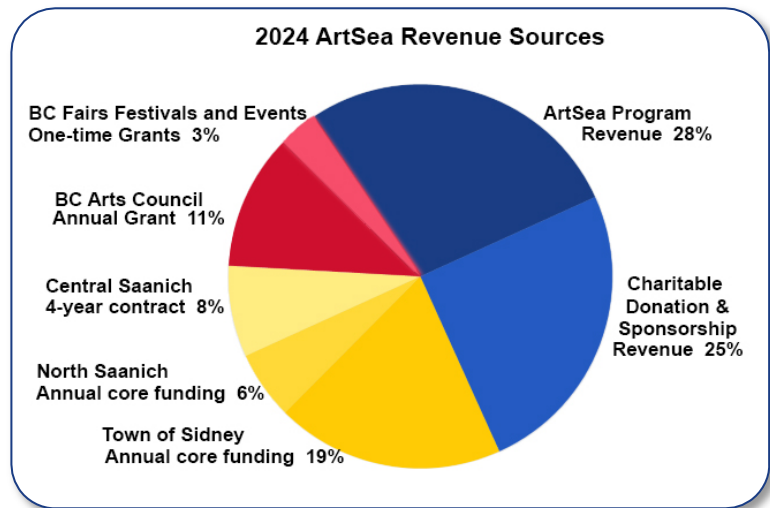
Sidney Events Advisory Group

ArtSea is an active member of The Sidney Event Advisory Group (SEAG), a collaborative forum of 18 local organizations that meets monthly to plan events that foster innovative partnerships, enhance community engagement, and support Sidney’s cultural and economic vitality.

2024 ArtSea Revenue Sources

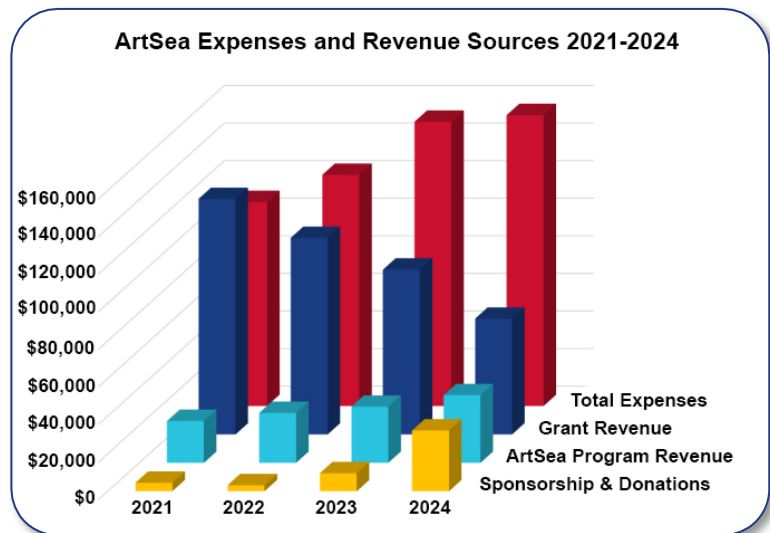
ArtSea remains committed to offering a diverse range of arts and cultural programs while serving as a vital creative hub for the Saanich Peninsula. To sustain this work, securing reliable annual funding is essential for maintaining high-quality, accessible programming.

In 2024, internally generated revenue—including gallery rentals, membership fees, workshop registrations, and lantern kit sales—accounted for approximately 28% of total income. While this is an important revenue stream, it covers only a portion of annual expenses and highlights the need for diverse funding sources. Municipal funding remains the most stable and consistent source of support, helping to sustain core operations and programs. However, municipal contributions make up only a modest share of overall operating costs. To bridge the gap, ArtSea relies heavily on grants and sponsorships, which, while critical, place significant administrative demands on the small team.



Despite our best efforts to secure additional funding through program adjustments, new grants, and fundraising initiatives, we continue to face a growing gap between revenue and expenses—a trend clearly illustrated in the graph, “ArtSea Expenses and Revenue Sources 2021-2024,” showing that expenses have risen due to increasing costs in insurance premiums, wages, facility maintenance, and materials for arts programming. At the same time, revenue from grants and sponsorships declined in 2024 compared to previous years, in part due to heightened competition for limited funding opportunities. This dynamic is clearly illustrated in the graph, “ArtSea Expenses and Revenue Sources 2021-2024,” which shows a steady rise in expenses and a gradual decline in revenue since 2021.

In 2024, ArtSea received significantly less grant funding than anticipated, affecting the ability to meet budgeted targets. This shortfall underscores the importance of diversifying revenue streams and remaining adaptable in financial planning.



In response, ArtSea took deliberate steps to address these challenges by strengthening community engagement through new and renewed sponsorships, attracting additional donors, and introducing creative fundraising initiatives. On the expense side, ArtSea benefited from generous in-kind contributions from local businesses and organizations, helping to offset some rising costs. To ensure transparency and accountability, ArtSea will continue to provide detailed financial reports to funders, outlining how funds are used, program achievements, and areas for improvement.

2024 Grant and Sponsorship Revenue

As a charitable organization, ArtSea relies on the generous support of our community to deliver arts and cultural programming. We are immensely grateful for the financial assistance we receive through grants, sponsorships, donations, and in-kind support from our partners.

In 2024, primary funding came from municipal and provincial grants. Annual support from the Town of Sidney, the District of North Saanich, and a new four-year contract with the District of Central Saanich, alongside funding from the BC Arts Council and one-time grants for the Lantern Festival and ArtSea Studio Tour through the BC Fairs Festivals and Events Grant, accounted for approximately 42% of our total revenue. These funds were essential in covering program and operational expenses and supporting various community initiatives. Although ArtSea did apply for additional support from local foundations in 2024, grant funding was not made available.



In 2023 by the Media and Fundraising Coordinator launched the ArtSea President's Circle, a sponsorship program that encourages local organizations to contribute to ArtSea programming through cash or in-kind donations. Now in its second year, the ArtSea President's Circle received generous support from eight members in 2024. In return, ArtSea acknowledges these supporters in marketing and communication materials. Collectively, the President's Circle contributors provided over \$17,000 in financial support and event more through in-kind donations to ArtSea.



Community and In-kind support was also provided by The Shaw Centre for the Salish Sea, Panorama Recreation Centre, The McTavish Academy of Art, The Sidney North Saanich Library, The Peninsula News Review, Coast Capital Savings, St. Andres Anglican Church, The Brentwood Bay Emporium, CHEK News, Island Blue Art & Framing, Buddies Toys, and members of the Sidney Events Advisory Committee.

As grant funding for the arts and culture sector continues to decline, ArtSea continues to explore funding opportunities and manage expenditures to sustain enriching community programs, support paid positions, enhance access and engagement, and ensure the long-term viability of our organization.

ARTSEA COMMUNITY ARTS COUNCIL SOCIETY

FINANCIAL INFORMATION

DECEMBER 31, 2024

TABLE OF CONTENTS

	Page
Compilation Engagement Report	
Financial Information	
Statement of Operations	1
Statement of Financial Position	2
Statement of Changes in Net Assets	3
Notes to the Financial Information	4 - 5

COMPILATION ENGAGEMENT REPORT

To the members of
ArtSea Community Arts Council Society

On the basis of information provided by the organization, we have compiled the statement of financial position of ArtSea Community Arts Council Society as at December 31, 2024, the statements of operations and changes in net assets for the year then ended, and note 1, which describes the basis of accounting applied in the preparation of the compiled financial information ("financial information").

The organization is responsible for the accompanying financial information, including the accuracy and completeness of the underlying information used to compile it and the selection of the basis of accounting.

We performed this engagement in accordance with Canadian Standard on Related Services (CSRS) 4200, Compilation Engagements, which requires us to comply with relevant ethical requirements. Our responsibility is to assist the organization in the preparation of the financial information.

We did not perform an audit engagement or a review engagement, nor were we required to perform procedures to verify the accuracy or completeness of the information provided by the organization. Accordingly, we do not express an audit opinion or a review conclusion, or provide any form of assurance on the financial information.

Readers are cautioned that the financial information may not be appropriate for their purposes.

Sidney, BC
April 7, 2025

Hughesman Morris Liversedge

Hughesman Morris Liversedge
Chartered Professional Accountants

ARTSEA COMMUNITY ARTS COUNCIL SOCIETY
STATEMENT OF OPERATIONS
FOR THE YEAR ENDED DECEMBER 31

	2024	2023
REVENUES	\$ 161,463	\$ 148,229
EXPENDITURES		
Advertising and promotion	6,637	8,039
Amortization	1,621	2,225
Board development	-	154
Credit card and bank fees	1,157	1,485
Dues and memberships	1,361	1,467
Honoraria, awards and prizes	2,975	2,670
Insurance	2,211	805
Office	1,573	2,550
Professional fees	4,476	5,525
Rent	426	205
Repairs and maintenance	9,618	2,521
SPACG	31,560	21,394
SPACG administrative expenses	-	344
Utilities	6,008	4,353
Volunteer appreciation	1,304	1,179
Wages, contracted services and benefits	117,713	117,025
Website design and maintenance	793	996
	189,433	172,937
DEFICIENCY OF REVENUES OVER EXPENDITURES	\$ (27,970)	\$ (24,708)

See accompanying notes

1

ARTSEA COMMUNITY ARTS COUNCIL SOCIETY
STATEMENT OF FINANCIAL POSITION
AS AT DECEMBER 31

	2024	2023
ASSETS		
CURRENT		
Cash and short-term investments	\$ 66,550	\$ 49,216
Restricted cash (note 2)	44,551	97,311
GST receivable	138	192
Prepaid expenses	-	169
	<u>111,239</u>	<u>146,888</u>
Property, plant and equipment (note 3)	4,840	6,460
Websites	<u>8,918</u>	<u>8,918</u>
	<u>\$ 124,997</u>	<u>\$ 162,266</u>
LIABILITIES		
CURRENT		
Accounts payable and accrued liabilities	\$ 5,139	\$ 5,653
Deferred revenue	7,675	17,700
Grants in advance (note 4)	<u>44,551</u>	<u>43,311</u>
	<u>57,365</u>	<u>66,664</u>
NET ASSETS		
FUND BALANCES	<u>67,632</u>	<u>95,602</u>
	<u>\$ 124,997</u>	<u>\$ 162,266</u>

Approved on behalf of the Board

President Ethel Failor

Treasurer Wendy Woodard

See accompanying notes

ARTSEA COMMUNITY ARTS COUNCIL SOCIETY
STATEMENT OF CHANGES IN NET ASSETS
FOR THE YEAR ENDED DECEMBER 31

	General Fund	Internally Restricted Fund	Total
BALANCE, BEGINNING OF YEAR	\$ 41,602	\$ 54,000	\$ 95,602
Deficiency of revenues over expenditures	(27,970)	-	(27,970)
Interfund transfer	54,000	(54,000)	-
BALANCE, END OF YEAR	\$ 67,632	\$ -	\$ 67,632

See accompanying notes

3

ARTSEA COMMUNITY ARTS COUNCIL SOCIETY
NOTES TO THE FINANCIAL INFORMATION
AS AT DECEMBER 31, 2024

1. BASIS OF ACCOUNTING

The basis of accounting applied in the preparation of the balance sheet of ArtSea Community Arts Council Society as at December 31, 2024, and the income statement for the year then ended, is on a historical cost basis, reflecting cash transactions with the addition of:

- (a) accounts receivable/payable, including accruals
- (b) prepaid expenses and deposits
- (c) property, plant and equipment amortized according to rates in the property, plant and equipment note
- (d) deferred revenue

2. RESTRICTED CASH

	<u>2024</u>	<u>2023</u>
Internally restricted	\$ -	\$ 54,000
Saanich Peninsula Arts and Culture Program Grants	<u>44,551</u>	<u>43,311</u>
	<u>\$ 44,551</u>	<u>\$ 97,311</u>

In previous years, the Board internally restricted \$54,000 to be used towards future costs of acquiring a new premises, as the Town of Sidney estimated in 2017 that the remaining useful life of the current premises was 5 years. However, during the current year the Town sent engineers to inspect the building who deemed it safe for the foreseeable future eliminating the need to internally restrict any funding.

3. PROPERTY, PLANT AND EQUIPMENT

	<u>Cost</u>	<u>Accumulated amortization</u>	<u>2024</u>	<u>2023</u>
Computer equipment	\$ 10,530	\$ 8,232	\$ 2,298	\$ 4,119
Equipment	26,414	23,872	2,542	3,178
Leasehold improvements	11,432	11,432	-	(837)
	<u>\$ 48,376</u>	<u>\$ 43,536</u>	<u>\$ 4,840</u>	<u>\$ 6,460</u>

ARTSEA COMMUNITY ARTS COUNCIL SOCIETY
NOTES TO THE FINANCIAL INFORMATION
AS AT DECEMBER 31, 2024

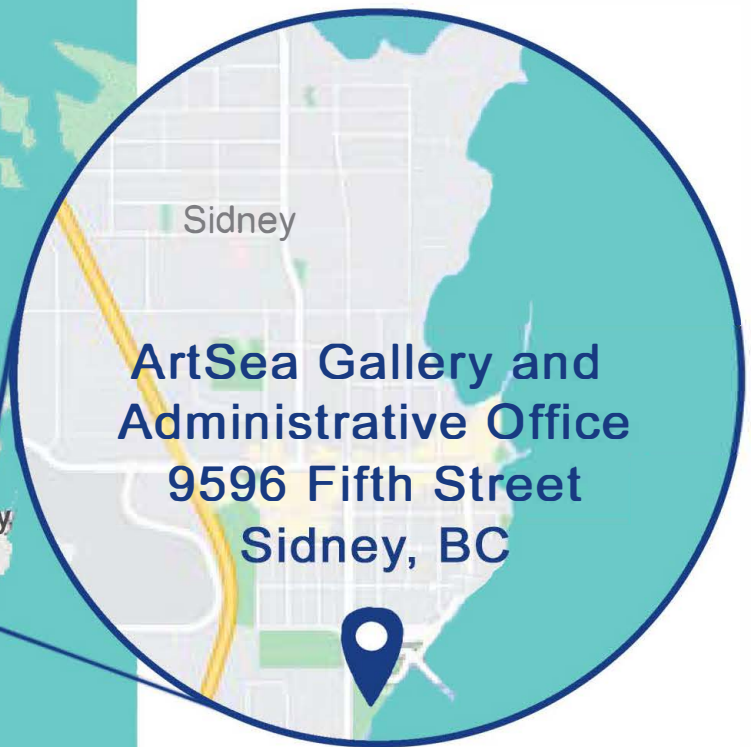
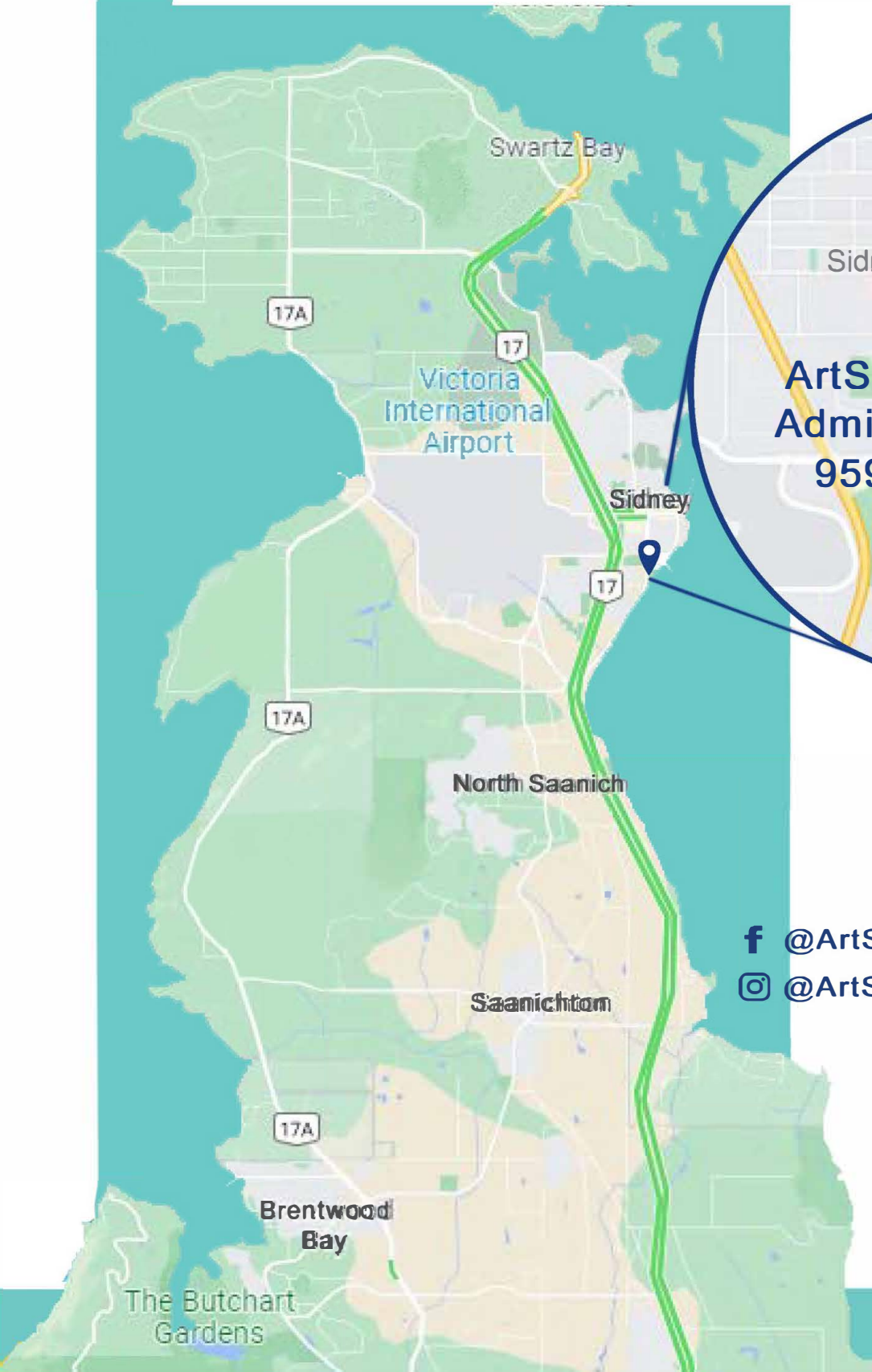
4. GRANTS IN ADVANCE

The Society receives and administers restricted grants funded by the Town of Sidney and the District of North Saanich. These grants are for the Saanich Peninsula Arts and Culture Program (SPACG) which is a municipal grant program established to support local individuals, groups and organizations with funding for arts and culture initiatives designed to benefit Peninsula residents and communities. The Society received \$32,800 this year (2023 - \$32,800) and \$31,560 (2023 - \$21,394) was paid out to recipients. All funds received for the SPACG program are used solely for grant awards.

5. PROGRAMME ANALYSIS

	Income	Expenses	Total
Operations	\$ 44,848	\$ 71,047	\$ (26,199)
Gallery	44,574	45,097	(523)
Lantern Festival	24,861	25,021	(160)
Partnerships/Engagement	3,500	4,208	(708)
SPACG	31,560	31,560	-
Studio Tour	12,120	12,500	(380)
	\$ 161,463	\$ 189,433	\$ (27,970)

ArtSea Community Arts Council is a charitable organization that works to ignite interest and appreciation for all forms of arts and cultural activities on the Saanich Peninsula.



f @ArtSeaCommunityArtsCouncil
@ @ArtSeaCommunityArtsCouncil

artsea.ca